

PALBY FYN CUP 2022

20. May – 22. May 2022

Sailing Instructions DH / TEXEL

1 RULES

1.1 The regatta will be governed by the rules as defined in The Racing Rules of Sailing (RRS) including the prescriptions of the Nordic Sailing Federation and the Danish Sailing Association.

1.2 Furthermore, the following rules shall apply:

For DH-Boats:

- a. DH shall apply for boats using DH 2022 rating.

For Multi Hull:

- a. Multi Hull shall apply for boats using TEXEL rating.

For Double handed:

- a. Double handed shall apply for boats using DH 2022 rating.

For All:

- a. The class rules of the classes participating will apply. Use of electronic equipment for navigational purposes, establishing position etc. is permitted despite any class rule to the contrary.
- b. The right-of-way rules of the International Regulations for Preventing Collision at Sea (IRPCAS) will replace the rules of Part 2 of the Racing Rules of Sailing from 22.00 hrs to 04.00 hrs.
- c. When the right-of-way rules of the International Regulations for Preventing Collision at Sea (IRPCAS) replaces the racing rules of part 2, the wording "Part 2" in rules, which use this wording, is replaced with the wording: "The right-of-way rules of The International Regulations for Preventing collision at Sea (IRPCAS)". This change rules 44.1, 60.1(b) and 63.3(a).
- d. The regulations for navigational lights must be respected from 22.00 hrs to 04.00 hrs as well as when the visibility is less than 0,2 nm. This a warning of rules 48.
- e. Advertisement is permitted according to World Sailing regulation 20.
- f. Separate starts for class and standard boats will be made if the requirement is met at the end of registration.
- g. There is unconditional give-way towards all ferries and it is not permitted to anchor closer than 2.000 m to the entrance of any ferry berth.
- h. Sailing in the Traffic Separation Zone in the Great Belt is not permitted. Boats infringing this rule will be disqualified without a hearing. This changes RRS 63.1

1.3 **Following rules is changed:**

- RRS 61.3 and 62.2 are changed, see S.I. 14.1.
- RRS 62, see S.I. 10.
- RRS 63.1, see SI 1.3 (h).
- RRS A4 and A5, see 9.4.

If there is a conflict between languages the Danish text shall prevail.

2 NOTICES TO COMPETITORS

2.1 Notices to competitors will be posted on the official notice board located at Bogense Sejlklub's clubhouse.

2.2 There will be a skippers' briefing on Friday 20th May 2022, at 09.00 hrs, at Bogense Sejlklub's clubhouse. The course and weather forecast as well as information on changes of the regatta will be informed and posted.

2.3 The Race Committee may broadcast race information as a service on VHF channel 68 before and during each race. Failure of such communication to be given or received, shall not be grounds for redress. This changes RRS 62.1.

3 CHANGES TO SAILING INSTRUCTIONS

Any change to the sailing instructions will be posted before 09.00 hrs on 20th May, 2022.

4 SIGNALS MADE ASHORE

- 4.1 Signals made ashore will be displayed at the flagpole next to the clubhouse.
- 4.2 When flag AP is displayed ashore, '1 minute' is replaced with 'not less than 60 minutes' in the race signal AP.
- 5 SCHEDULE OF RACES**
- The scheduled time of the warning signal for the first race is Friday 20th May, 2022 at 11.00 hrs. Succeeding starts will be at intervals of 15 minutes. The smaller boats will start first and the bigger (fastest) boats later. The exact sequence of starts will appear from the list of entries.
- 6 CLASS FLAGS**
- Class flags will be a numeral pennant in accordance with the number of the start in the list of entries.
- 7 THE COURSE**
- 7.1 There are two options for courses:
- 7.1a The course is around Fyn, **with Fyn to port**. This option **will be signalled by Red** flag on Committee Vessel, and announced at the skippers' briefing.
The following marks are part of the course:
- Cardinal buoy at Thurø Rev, pos. 55° 01'24 N, 10° 44'05 E must be passed to port.
 - Passage between Sprogø and the Western pylon of the bridge, **see Attachment 2**.
 - Red L/B between Lillegrund and Fynshoved, pos. 55° 38'44 N, 10° 37'56 E must be passed to port.
 - Red L/B at Æbelø, pos. 55° 39'56 N, 10° 09'37 E. must be passed to port.
- 7.1b The course is around Fyn, **with Fyn to starboard**. This option **will be signalled by Green flag** on Committee Vessel, and announced at the skippers' briefing.
The following marks are part of the course:
- Red L/B at Æbelø, pos. 55° 39'56 N, 10° 09'37 E. must be passed to starboard.
 - Red L/B between Lillegrund and Fynshoved, pos. 55° 38'44 N, 10° 37'56 E must be passed to starboard.
 - Passage between Sprogø and the Western pylon of the bridge, **see Attachment 2**.
 - Cardinal buoy at Thurø Rev, pos. 55° 01'24 N, 10° 44'05 E must be passed to starboard.
- 7.2 The length of the course is approx. 138 nautical miles
- 7.3 The starting area is approx. 1 nm North off Bogense Marina.
- 7.4 The finishing area is approx ¾ nm North off the entrance to Bogense Marina in the area position: 55° 35'10 N, 10° 04'73 E **See Attachment 1**. Imprecise position can't be grounds for redress. This change RRS 62.1.
- 8 MARKS**
- 8.1 The starting mark will be 2 yellow cylindrical inflated buoys
- 8.2 The finishing marks will be 2 yellow cylindrical inflated buoys. One of this buoys may be attached to a RC boat.
- 8.3 Marks for limitation for starting area will be 2 yellow cylindrical inflated buoys.
- 9 START**
- 9.1 **Races will be started in accordance with the following procedure:**
Warning signal: 5 min. before starting signal. sound signal.
Numeral pennant of the start will be displayed.
(after start no. 10 the numeral pennant will be re-used in accordance with the list of entries)
Preparatory signal: 4 min. before starting signal. sound signal, Flag "P" displayed.
One-minute-signal: 1 min before starting signal. sound signal. Flag "P" down.
Starting signal: sound signal. Numeral pennant down.
- 9.2 The starting line will be between two yellow cylindrical buoys.
- 9.3 Boats whose warning signal has not been made shall avoid the starting area during the start sequence for other boats.
- 9.4 All signals will be displayed from the Committee Vessel at the Southern end of the starting line displaying Bogense Sejlklub's burgee. Visual signals may be repeated from a RC Boat at the Northern end of the starting line.
- 9.5 If any part of a boat's hull, crew or equipment is on the course side of the starting line or its extensions during the last minute before her starting signal, the boat will be penalised without a hearing by having 60 minutes added to her actual sailing time. This rule does not change the boat's obligation to start in

accordance with the definition 'Start'.

10

Change of the Course

The Race Committee may in view of adverse weather conditions or forecast change or shorten the course. Notice hereof will be given at the skippers' briefing and posted on the Notice Board not later than Friday 20th May, 2022, 09.00 hrs. This shall not be grounds for redress. Change of Rule 62.1.

11

THE FINISH

- 11.1 The finishing line will be between 2 yellow cylindrical buoys. **see Attachment 1.**
- 11.2 The finishing vessel will be at the Southern end of the finishing line and may during darkness display a yellow rotating light. The finishing line marks may be in the dark be equipped with flash lights.
- 11.3 *The starting number must be displayed in due time before the finish, and if necessary be illuminated.*

12

TIME LIMIT

The time limit for each start is 50 hrs.

13

PROTESTS AND REQUESTS FOR REDRESS

- 13.1 Protest forms are available at the Race Office and shall be delivered there within the protest time limit.
- 13.2 The protest time limit is 2 hours after the boat has finished.
The same time limit applies to requests for redress and to protests from the Race Committee and the Protest Committee against a boat. This changes RRS 61.3 and 62.2.
- 13.3 Hearings will take place in Bogense Sejlklub on 25rd Juni 2022 at approx. 18.00 hrs.
- 13.4 Information about protest from Race Committee or the Protest Committee against a boat will be given on the official notice board as required in rule 61.1(b).

14

SCORING.

- 14.1 A boat's scoring is calculated using the boat's corrected sailing time plus any penalty charges.
- 14.2 Following result calculation will be used:
- DH2021: Rating GPH
 - TEXEL: Rating TCF

15

CREW LIST

- 15.1 All boats must deliver a completed crew list to the Race Office before starting.
If the list is not delivered the boat will be scored DNS.
The manning is free (also for one-design class boats), except that single-handed sailing is not permitted. It is permitted to set crew members ashore but not to take new crew members on board.
- 15.2 Within 2 hours of her finish the rounding list must be delivered to the Race Office. If the rounding list is not delivered the boat will be scored DNF.

16

SAFETY REGULATIONS

- 16.1 With his signature on the registry form the skipper confirms that the boat is seaworthy and properly equipped and the crew is sufficient in numbers and experience to participate in the race in all possible weather conditions.
The organisers disclaim any liability for material and/or personal injury and damages in connection with the event.
- 16.2 For 2 persons sailing (Doublehanded), it is mandatory to wear life jackets with light and lifeline.

17

EXCLUSION OF BOAT

The Race Committee has in accordance with RRS 76 the right to reject a boat which is not considered suitable for the race.

18

EMERGENCY SITUATIONS

- 18.1 **In case of an emergency**
contact **VFK** (formerly SOK) on telephone +45 72850000 (day staff) or **Lyngby Radio** on DSC channel 70 - VHF channel 16 **or call 1-1-2.**
- 18.2 **In case of an accident (not emergency situations)**

You can contact **DSRS** stations: **Kerteminde** tel. +45 27601102, **Juelsminde** tel. +45 27601105, **Årø Havn** tel. +45 27601108 **Rudkøbing havn** tel. +45 27601104

19 ENTER PORT/RETIRE.

It is permitted to call at a port but a boat doing so or a boat that has stopped racing in any other way as well as a boat who has decided to retire, shall notify the Race Committee in Bogense on phone no.: +45 64 81 33 39 or an Official Support Boat as soon as possible.

20 RACE COMMITTEE BOATS.

The Race Committee's boats will display Bogense Sejlklub's burgee.

21 SUPPORT BOATS.

Team leaders, coaches and other support personnel shall stay at least 50 m from any boat racing.

22 HAUL-OUT RESTRICTIONS

Participating boats shall not be hauled out during the regatta from 10:00 hrs on the first day of the race and until the boat has finished except with the written permission of the race committee.

23 DIVING EQUIPMENT AND PLASTIC POOLS

Underwater breathing apparatus and plastic pools or their equivalent shall not be used around keelboats from 1000 hrs on the first day of the race until the boat has finished.

24 DISCLAIMER OF LIABILITY

Competitors participate in the regatta entirely at their own risk. See RRS 4, Decision to Race. The organizing authority will not accept any liability for material damage or personal injury or death sustained in conjunction with or prior to, during, or after the regatta.

25 INSURANCE

Each participating boat shall be insured with valid third-party liability insurance with a minimum coverage of DKK 10 million for personal injury and DKK 2 million for material damage per incident or the equivalent in other currency.

26 NATIONAL FLAG

The national flag shall not be displayed by a boat racing.

27 REGATTA OFFICE

The Regatta Office in Bogense Sejlklub's clubhouse is open from 19th Maj 14.00 hrs – 24.00 hrs and from 20th Maj 06.00 hrs until the end of regatta.

The regatta office may be contacted on phone no.: +45 64 81 33 39.

28 NAUTICAL CHARTS

The following Danish nautical charts cover the race: 114, 151, 152, 141, 142, 143.

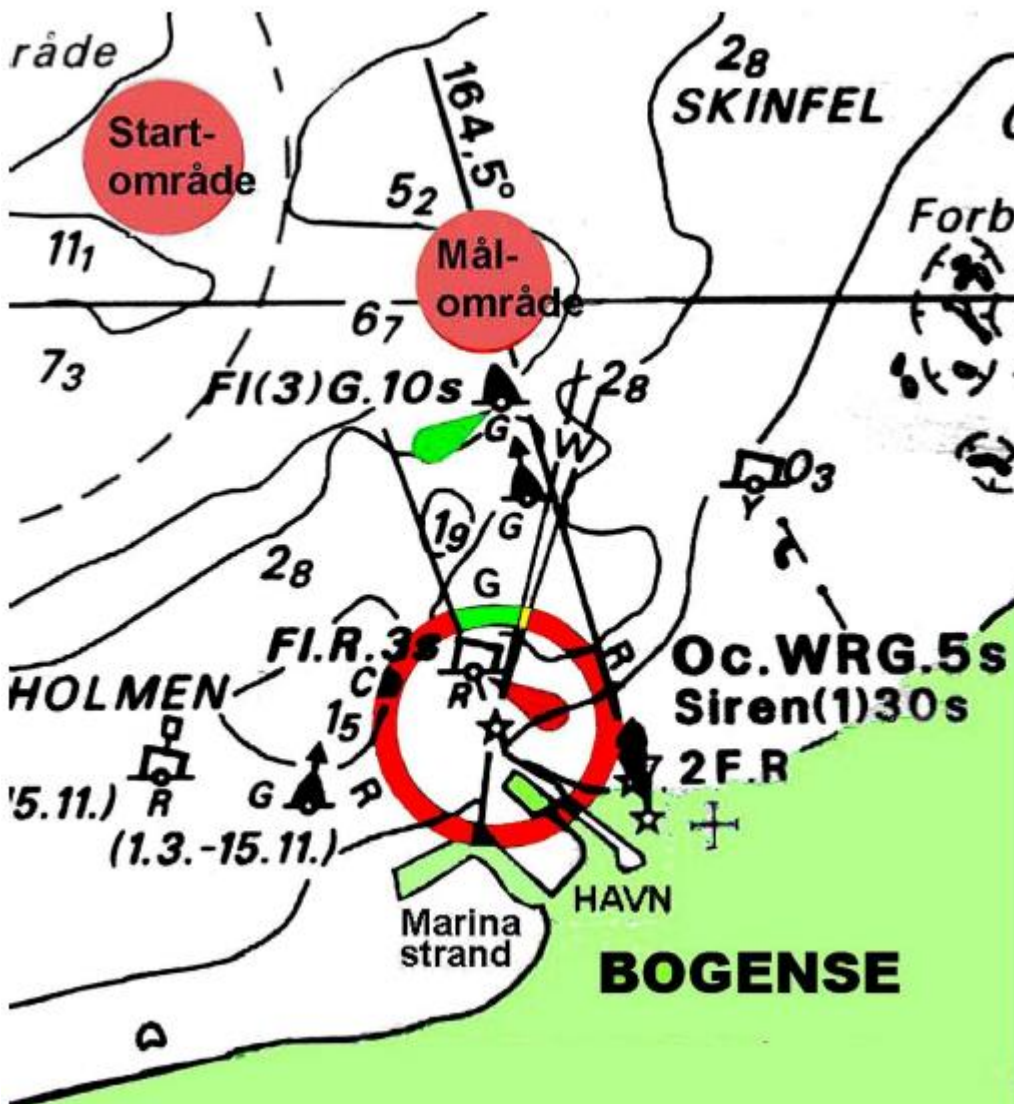
29 RESULTS

Finishing list and results will be available on www.fyncup.dk.

26.10.21 /PEN

26.11.2021 / Michaa

Attachment 1



Attachment 2

Bilag 2: Kort over gennemsejlingen ved Storebælt

